

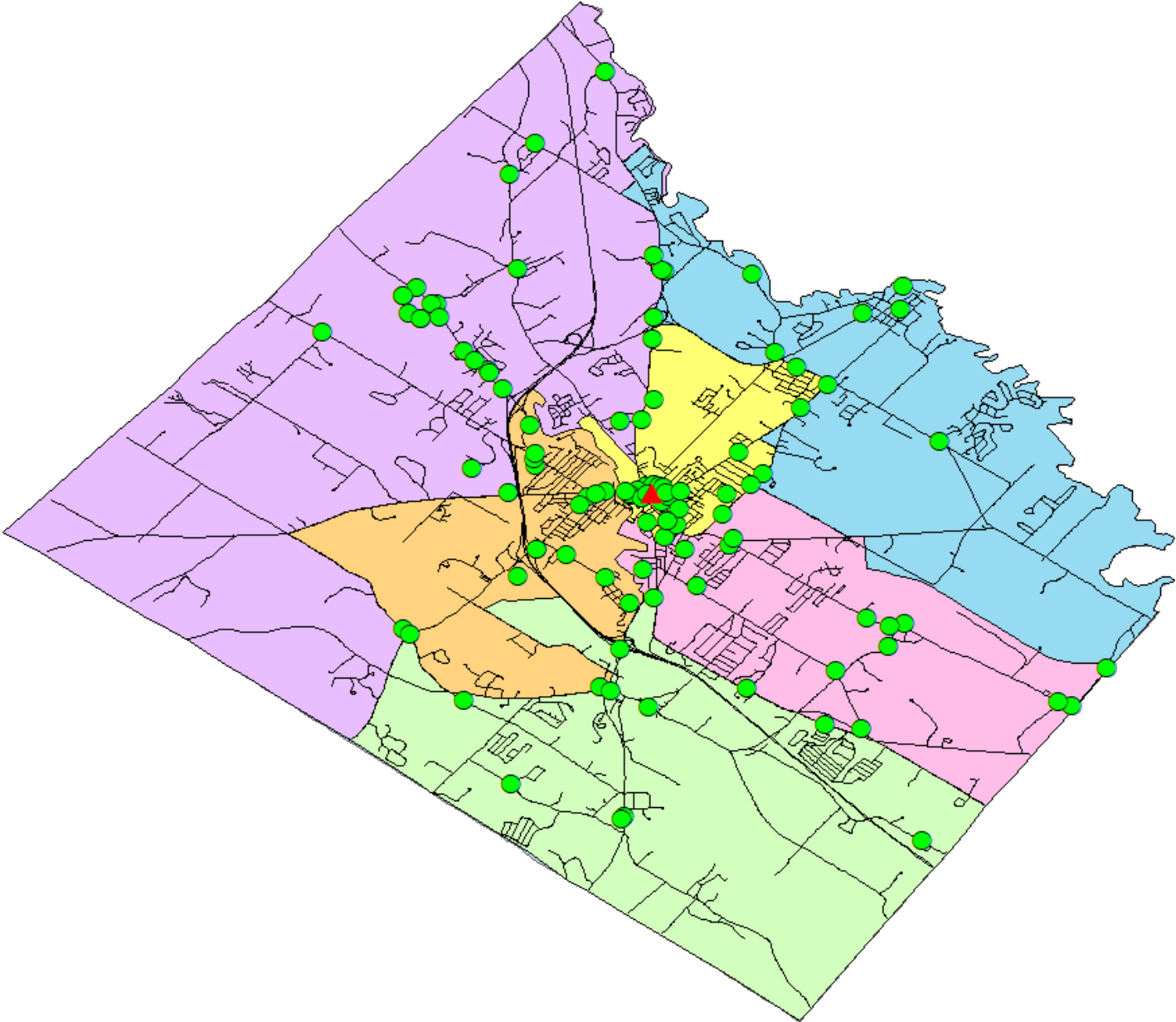
Rochester Police Department December 2017 Comp Stat Report



December 2017 Field Activities

FIELD ACTIVITIES										
	Dec-17	Dec-16	% Change	Nov-17	Oct-17	% Change	YTD 17	YTD 16	% Change	YTD 15
Traffic Stops	731	891	-18%	672	251	168%	6667	13394	-50%	12985
Arrests from Stops	29	19	53%	19	14	36%	265	419	-37%	424
Summons	37	33	12%	42	17	147%	407	904	-55%	929
Warnings	640	809	-21%	588	215	173%	5798	11652	-50%	11215
No Action	18	24	-25%	17	5	240%	174	309	-44%	304
Accidents	118	99	19%	80	103	-22%	1140	1012	13%	1047
Summons from Accidents	2	0	0%	2	7	-71%	31	38	-18%	72
Arrests from Accidents	12	4	200%	5	4	25%	83	66	26%	84
Field Interviews	9	4	125%	17	21	-19%	161	199	-19%	236
DWI	13	8	63%	8	8	0%	97	78	24%	105
Narcotics	0	2	-100%	1	4	-75%	32	23	39%	42
Alcohol	13	6	117%	7	4	75%	65	55	18%	63
DWI from Accidents	4	4	0%	6	3	100%	33	29	14%	29

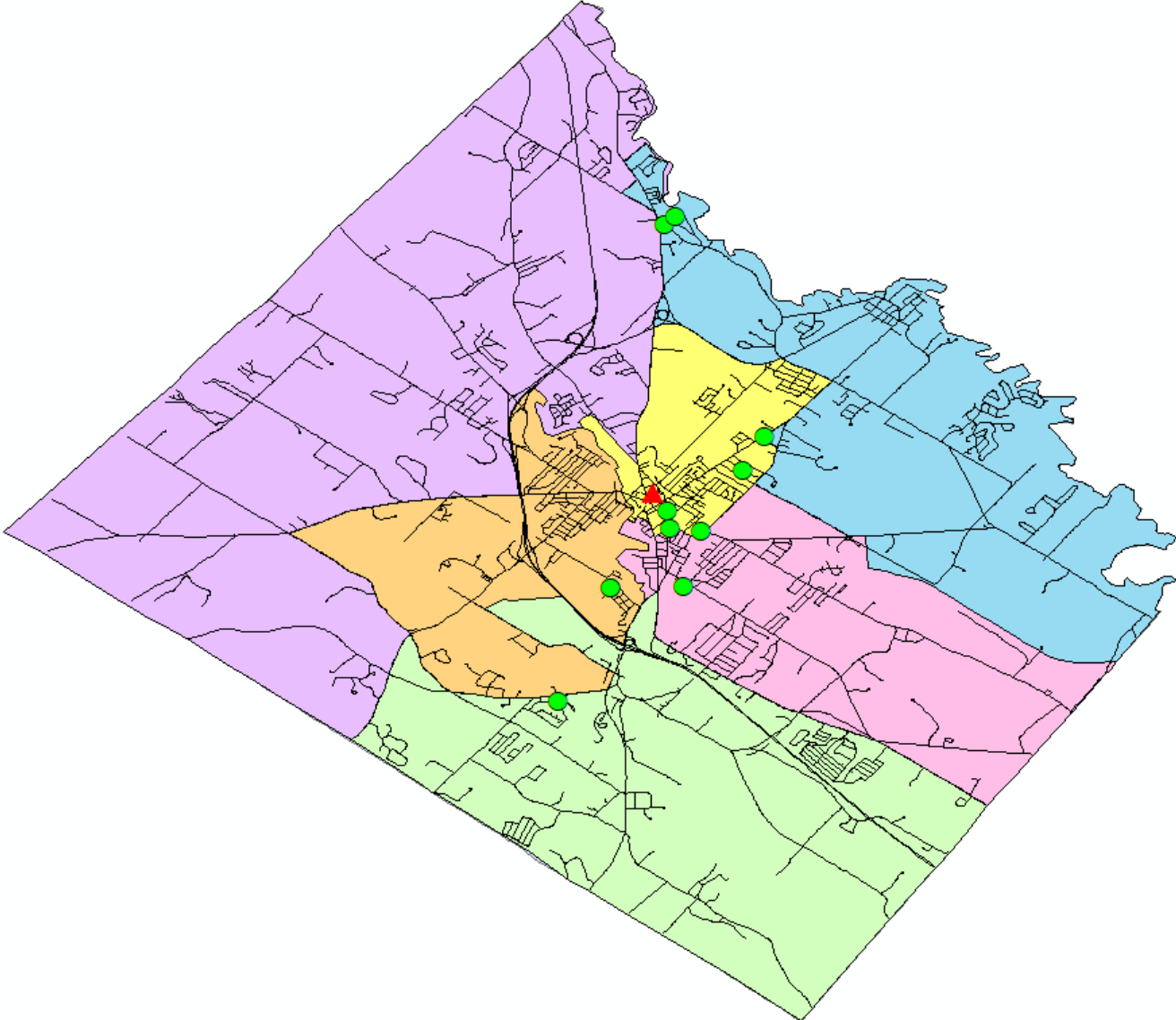
December 2017 Accidents



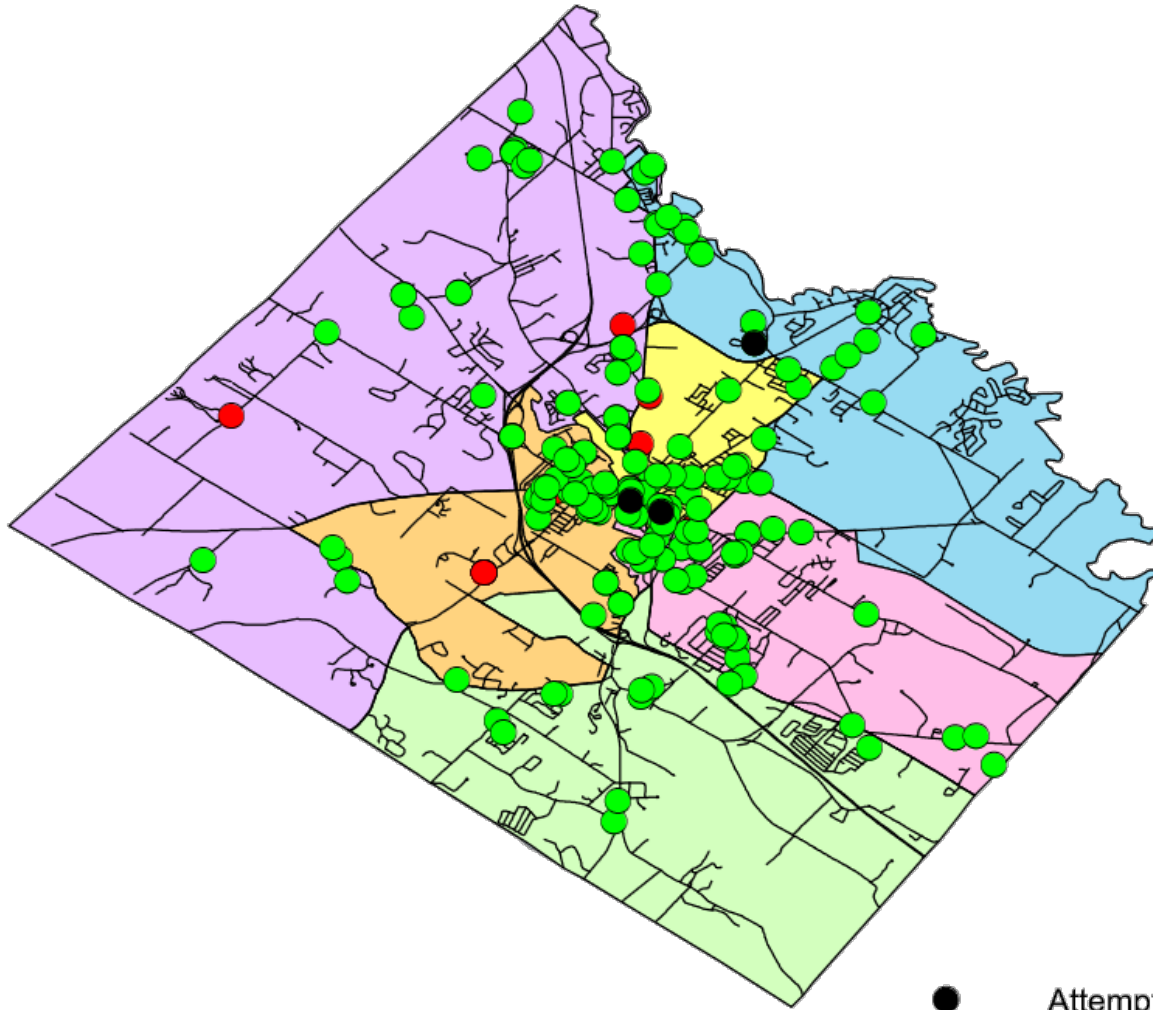
December 2017 Property Crimes

PROPERTY CRIME - OF's by Incident												
Specific Crimes	Dec-17	Dec-16	% Change	Nov-17	Oct-17	% Change	YTD 17	YTD 16	% Change	YTD 2017 Closure Rate	YTD 2016 Closure Rate	YTD 15
Shoplifting	14	13	8%	21	13	62%	255	288	-11%	66%	76%	253
Theft from M/V	11	11	0%	8	16	-50%	190	124	53%	6%	5%	182
All Other Theft	41	33	24%	28	30	-7%	453	440	3%	20%	18%	500
M/V Theft	0	2	-100%	1	3	-67%	26	36	-28%	23%	22%	24
Vandalism	29	29	0%	24	42	-43%	427	454	-6%	29%	29%	437
Burglary	8	9	-11%	7	8	-13%	110	137	-20%	14%	12%	96
Total Property	103	97	6%	89	112	-21%	1461	1479	-1%	26%	27%	1492
PROPERTY CRIME - AR's by Incident												
Specific Crimes	Dec-17	Dec-16	% Change	Nov-17	Oct-17	% Change	YTD 17	YTD 16	% Change	YTD 2017 Closure Rate	YTD 2016 Closure Rate	YTD 15
Shoplifting	18	12	50%	14	12	17%	168	219	-23%	66%	76%	201
Theft from M/V	0	0	0%	0	1	-100%	11	6	83%	6%	5%	3
All Other Theft	9	4	125%	7	3	133%	91	81	12%	20%	18%	119
M/V Theft	0	0	0%	0	1	-100%	6	8	-25%	23%	22%	9
Vandalism	5	6	-17%	6	14	-57%	123	133	-8%	29%	29%	138
Burglary	0	0	0%	0	1	-100%	15	16	-6%	14%	12%	18
Total Property	32	22	45%	27	32	-16%	414	463	-11%	26%	27%	488

December 2017 Theft from MV



2017 Theft from MV



181 Theft from Motor Vehicles:

162 Unlocked Vehicles (90%)
16 Use of Force on Locked Vehicles
3 Attempts

● Attempt

● Unlocked

● Locked

December 2017 Drug Offenses

DRUG CRIME - OF's by Incident

Specific Crimes	Dec-17	Dec-16	% Change	Nov-17	Oct-17	% Change	YTD 17	YTD 16	% Change	YTD 2017 Closure Rate	YTD 2016 Closure Rate	YTD 15
Possession	11	11	0%	13	17	-24%	191	204	-6%	92%	91%	258
Overdoses	17	7	143%	25	20	25%	235	128	84%			106
<i>Fatal</i>	2	2	0%	0	3	-100%	21	19	11%			10
Total Drug	28	18	56%	38	37	3%	426	332	28%			364

DRUG CRIME - AR's by Incident

Specific Crimes	Dec-17	Dec-16	% Change	Nov-17	Oct-17	% Change	YTD 17	YTD 16	% Change	YTD 2017 Closure Rate	YTD 2016 Closure Rate	YTD 15
Possession	11	12	-8%	8	16	-50%	176	185	-5%	92%	91%	225

December 2017 Violent Crimes

VIOLENT CRIME - OF's by Incident												
Specific Crimes	Dec-17	Dec-16	% Change	Nov-17	Oct-17	% Change	YTD 17	YTD 16	% Change	YTD 2017 Closure Rate	YTD 2016 Closure Rate	YTD 15
Homicide	0	0	0%	0	0	0%	0	1	-100%	0%	0%	0
Robbery	2	2	0%	2	1	100%	26	17	53%	38%	76%	17
Aggravated Assault	8	5	60%	5	5	0%	78	68	15%	68%	60%	81
<i>from DV</i>	6	4	50%	3	1	200%	38	43	-12%			35
Simple Assault	28	35	-20%	33	39	-15%	471	538	-12%	46%	49%	519
<i>from DV</i>	22	20	10%	11	15	-27%	216	283	-24%			268
Total Violent	38	42	-10%	40	45	-11%	575	624	-8%	38%	47%	617
VIOLENT CRIME - AR's by Incident												
Specific Crimes	Dec-17	Dec-16	% Change	Nov-17	Oct-17	% Change	YTD 17	YTD 16	% Change	YTD 2017 Closure Rate	YTD 2016 Closure Rate	YTD 15
Homicide	0	0	0%	0	0	0%	0	1	-100%	0%	100%	0
Robbery	1	1	0%	0	0	0%	10	13	-23%	38%	76%	7
Aggravated Assault	7	2	250%	3	3	0%	53	41	29%	68%	60%	57
Simple Assault	13	20	-35%	17	18	-6%	216	266	-19%	46%	49%	306
Total Violent	21	23	-9%	20	21	-5%	279	321	-13%	38%	47%	370